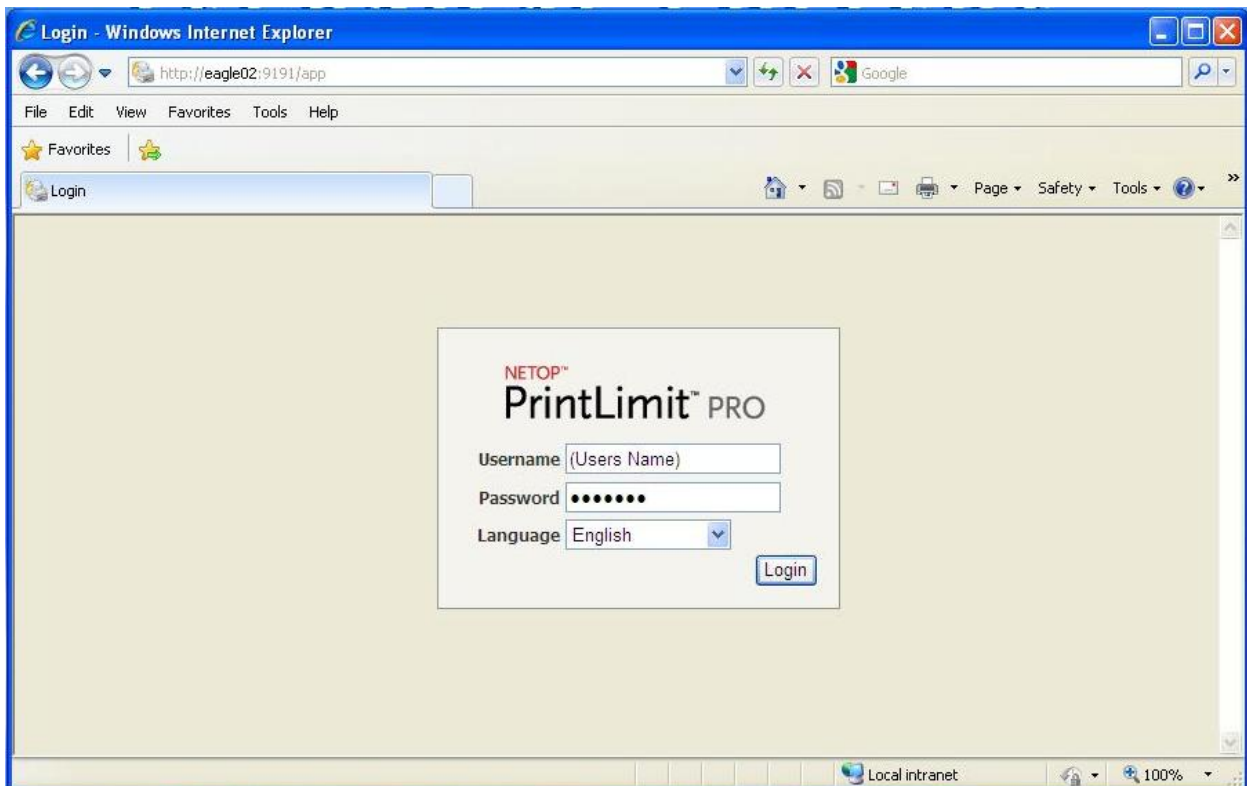


Instructions for adding additional print credits to your account

1. Visit the bookstore to have a print card charged to your student account. Various denominations are available. (**You must pay this fee at the business office during normal business hours**)
2. Log into a computer in one of the labs or library and when your balance appears, click details.



3. You will then be at the login screen. Enter the same password that you used to log into the computer.



4. After a successful login, you will be shown a summary of your account, click the “Redeem Card” link on the left side of the page.

The screenshot shows the 'PrintLimit Pro Summary' page. The browser title is 'Print-Limit Pro : Summary - Windows Internet Explorer'. The address bar shows 'http://eagle02:9191/app'. The page header includes 'PrintLimit PRO' and 'Logged in as:'. A sidebar on the left contains navigation links: Summary (highlighted with a red box), Rates, Redeem Card, Transaction History, Recent Print Jobs, Jobs Pending Release, and Logout. The main content area is titled 'Summary' and contains a table with the following data:

User name	
Balance	\$15.00
Total print jobs	0
Total pages	0

Below the table is an 'Activity' section titled 'Balance history for finals', which contains a line graph showing a constant balance of \$15.00 from July 28 to July 30, 2009. The x-axis is labeled 'Day' and the y-axis is labeled 'Balance'. At the bottom of the page, there is an 'Environmental Impact' section with the following data:

Trees	0.000% of a tree since Jul 28, 2009
Carbon	0 grams of carbon dioxide since Jul 28, 2009
Energy	Equivalent to running a 60W bulb for 0.0 hours

The page footer indicates 'Logged in as:'.

The screenshot shows the 'PrintLimit Pro Redeem Card' page. The browser title is 'Print-Limit Pro : Redeem Card - Windows Internet Explorer'. The address bar shows 'http://eagle02:9191/app;jsessionid=1f399b21ccnm?service=page/UserTopUpCards'. The page header includes 'PrintLimit PRO' and 'Logged in as:'. A sidebar on the left contains navigation links: Summary, Rates, Redeem Card (highlighted with a red box), Transaction History, Recent Print Jobs, Jobs Pending Release, and Logout. The main content area is titled 'Redeem Card' and contains the following text:


Enter the Card number and press the "Redeem Card" button to redeem.

NOTE: All requests to redeem cards are logged.

Below the text is a form with a 'Card number' label and an input field. A 'Redeem Card' button is located below the input field. At the bottom of the page, there is a footer with the following text:

Logged in as:
Print-Limit Pro 9.4 (Build 7994 2009-06-26)
© Copyright 1999-2009. GenevaLogic Ltd. All rights reserved.

5. Enter the card number from the card purchased at the bookstore



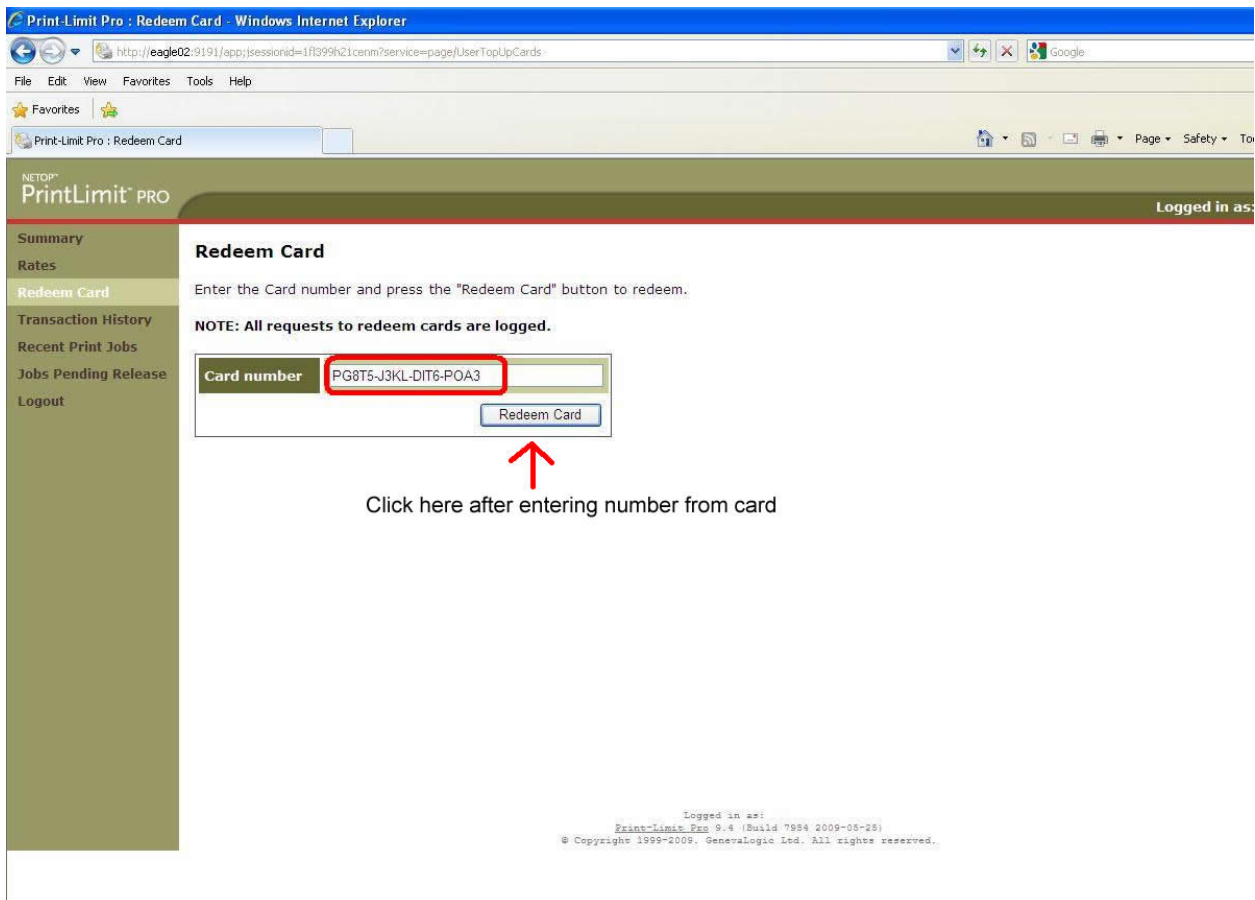
Value: \$XX.00

Website: <http://eagle02:9191>

PG8T5-J3KL-DIT6-POA3

This card has no monetary value, and may not be redeemed for cash or refund.

Valid Until: 20XX-XX-XX



Print-Limit Pro : Redeem Card - Windows Internet Explorer

http://eagle02:9191/app;jsessionid=1f0399h21cenn?service=page/UserTopUpCards

Print-Limit Pro : Redeem Card

NETOP™
PrintLimit™ PRO

Logged in as:

Redeem Card

Enter the Card number and press the "Redeem Card" button to redeem.

NOTE: All requests to redeem cards are logged.

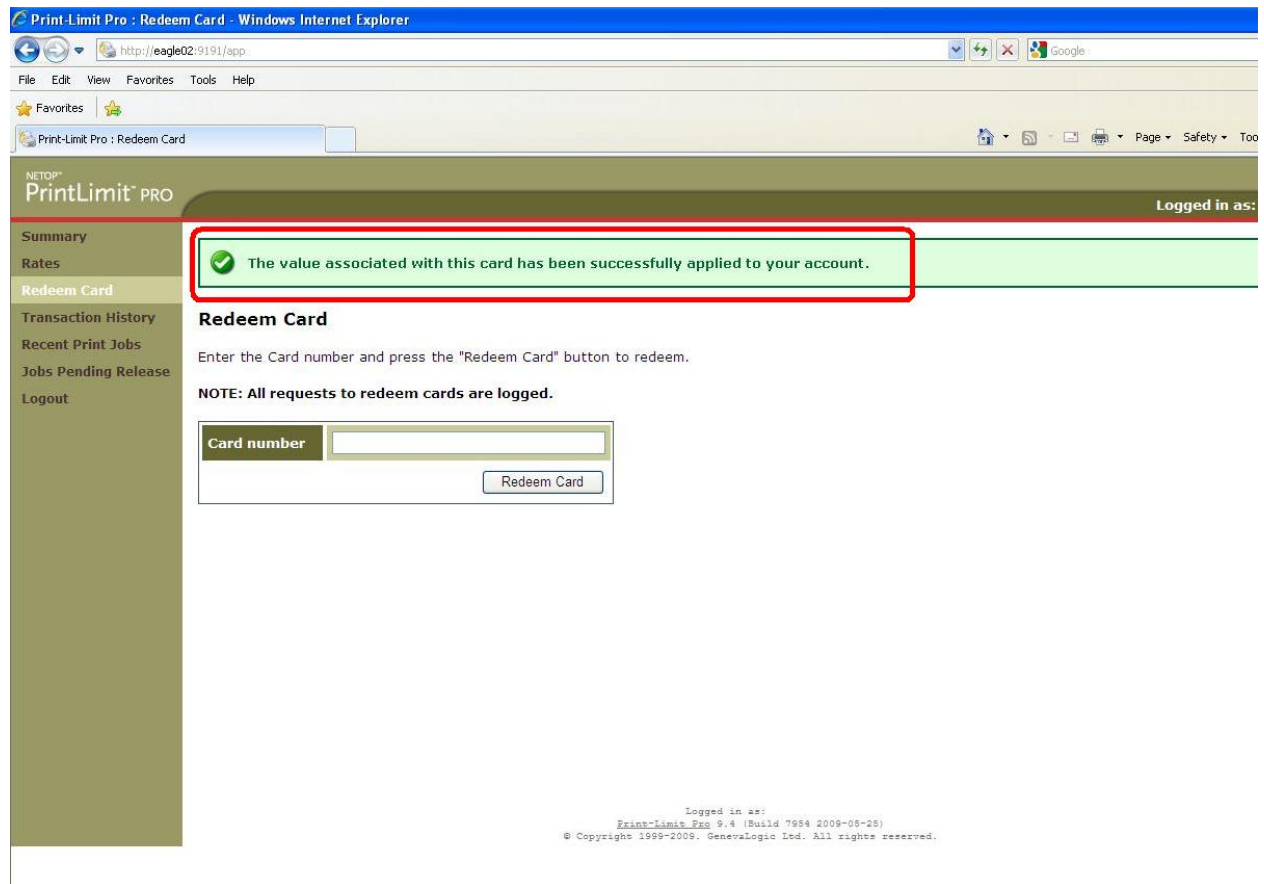
Card number PG8T5-J3KL-DIT6-POA3

Redeem Card

Click here after entering number from card

Logged in as:
PrintLimit Pro 9.4 (Build 7984 2009-05-28)
© Copyright 1999-2009, GeneralLogic Ltd. All rights reserved.

6. After clicking the "Redeem Card" button, a message stating that the value associated with the card has been applied to your account.



- * Each semester begins with a \$15.00 print balance.
- **Unused balances do not carry over into the next semester.
- *** No refunds are given for unused balances on purchased print cards.